

BRUSH CUTTERS
for **EXCAVATORS &**
BACKHOES



The **LEADER OF THE PACK**—any way you cut it!

ABOUT US

Cross-Tech Manufacturing is a worldwide leader in hydraulic rotary brush cutters under the name Brush Wolf. Cross-Tech's cutting edge manufacturing process begins with our high standards to source the best materials available and to use industry-leading technology to design and build our products. All Brush Wolf attachments are designed, fabricated, welded,

powder coated, and assembled under one roof in Crosslake, Minnesota. Our goal has always been to ensure customers receive optimal machine performance and consistent reliability. Compare Brush Wolf products to our competitor's and see why we're known for our unsurpassed quality. **Brush Wolf rotary brush cutters will not only meet but exceed your expectations!**





The 4200X and 4800X are Brush Wolf's first generation of mini excavator brush cutters. These machines utilize a right angle gearbox in conjunction with a gerotor style hydraulic motor to power a 1" blade carrier. Both sizes come standard with chain debris curtains to reduce material discharge and an operator side, under-deck laminated 1/4" plate to provide additional safety from flying objects. The deck and frame construction are fully boxed and continuously welded for added strength and structural reliability. Years of customer cutting experience has provided us with the knowledge needed to build a machine that will survive the years of abuse

it will see in the field. In addition, the simplistic design and low cost of ownership makes it easy to operate and affordable to service. X Model cutters are commonly used to clear brush along hillsides, riverbanks, and in areas that are challenging to access. Models are available in 42" and 48" widths and operate with hydraulic flows ranging from 8-40 GPM. All X models come equipped with the necessary mounting bracket or "hanger" needed to attach to your specific operating equipment. Turn your mini excavator into a versatile cutting machine with an X Model Brush Wolf!

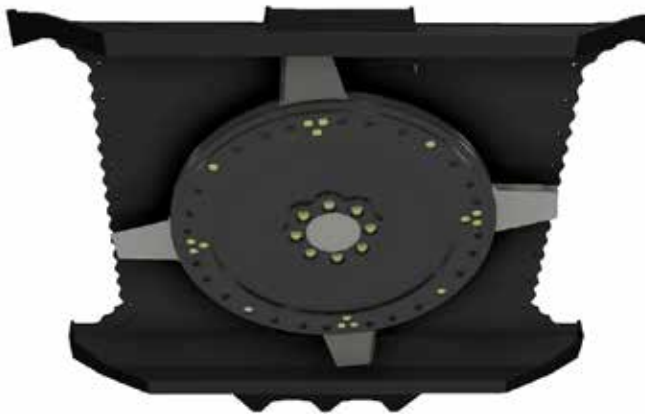
42X - 48X



Brush Wolf X-Model cutters have evolved over the years to meet the specific needs of our customers and are more compatible with the various excavator options available today. The next generation of mini excavator brush cutters are designed with removable chain curtains to provide the owner/operator with the flexibility to choose their cutting style depending on the application. New X-Models also offer performance improvements through the use of a direct drive piston motor and a

robust bearing housing. These units incorporate a hinged hood to protect drive components and hydraulic lines from impacts. A hydraulic relief block and an integrated case drain are also used to protect your investment from operating pressure fluctuations. Next gen X-Models for mini excavators are available in 42" and 48" widths and operate with hydraulic flows ranging from 14-29 GPM. Experience the torque and reliability of the next generation!





The 60X and 72X models feature all the same structure and drive components as the next gen line of mini cutters but are designed for full size excavators. A larger bearing housing is used to support the massive blade carrier and withstand the stress of extreme operating conditions. Two blade carrier options are available, one with three drop blades and the other with four flat blades, both have their place in the field. There are also two models to choose from in each cutter size depending on

the hydraulic flow of your operating machine. HD units are offered for flow rates between 20-32 GPM and XP for units between 33-45 GPM. An accumulator is used on all models to eliminate cavitation at shutdown, this means no noise and a longer motor life. Full size X-Models also come standard with a case drain line to protect from pressure spikes. Brush Wolf 60X and 72X excavator brush cutters will make quick work of your toughest jobs.



GALLERY



Since 1999, Brush Wolf brush cutters have helped contractors and land owners clear, manage, and maintain properties across America. Brush Wolf strives to offer well built products at an affordable price and backs up every machine with a 3 year structural warranty. Brush Wolf was a pioneer of the rotary brush cutting industry and continues to lead the way in design and innovation. Brush Wolf cutters are often imitated but never duplicated!



SPECIFICATIONS

4200X - 4800X

MODEL	REQUIRED GPM	CUTTING CAPACITY	CUTTING WIDTH	WEIGHT (LBS)	DECK THICKNESS
4200X	8-20	3"	42"	690	10GA
4800X LF	8-15	3"	48"	860	7GA
4800X	16-25	4"	48"	860	7GA
4800X HF	26-40	5"	48"	890	7GA

42X - 48X

MODEL	REQUIRED GPM	CUTTING CAPACITY	CUTTING WIDTH	WEIGHT (LBS)	DECK THICKNESS
42X	14-23	4"	42"	750	10GA
48X	17-29	5"	48"	800	7GA

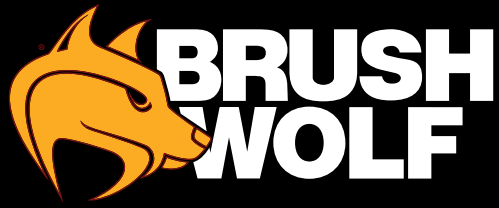
60X - 72X

MODEL	REQUIRED GPM	CUTTING CAPACITY	CUTTING WIDTH	WEIGHT (LBS)	DECK THICKNESS
60X HD	20-32	10"	60"	1730/1940	1/4"
60X XP	33-45	10"	60"	1730/1940	1/4"
72X HD	23-32	10"	72"	2080/2330	1/4"
72X XP	33-45	10"	72"	2080/2330	1/4"

- Hanger and hardware are not included in listed X-Model pricing

- Hanger and hardware are not included in listed X-Model weights

- 60X and 72X weights vary depending on which blade carrier is included



3 YEAR
LIMITED
WARRANTY

**Structural Components,
Materials, and Weldment**

Hydraulic Motor

1.5-YEAR LIMITED WARRANTY

Gearbox

1.5-YEAR LIMITED WARRANTY

Bearing Housing

1.5-YEAR LIMITED WARRANTY

Cylinders

1.5-YEAR LIMITED WARRANTY



brushwolf.com
sales@brushwolf.com
877-390-9857

Cross-Tech Manufacturing
33877 Gendreau Road
Crosslake, MN 56442